

2019 • IwB Interational Charrette



PORTERPARTNERSHIP

CREATING PROSPERITY IN THE COMMUNITY FOR INDIVIDUALS

Georgia Mac Mac

Bahar Esmaeili
Marcela Araujo

Raphael Segard
Tyler Lovell

Stephanie Ho
Samin Yazden

Jiahua Zhang
Guiherme Sutto de Rezende

A map of York Region, Ontario, Canada, with a light blue overlay. The map shows various municipalities including Gilford Beach, Coulson's Hill, Newton Robinson, Bradford West Gwillimbury, Bond Head, Ansnorveldt, Newmarket, East Gwillimbury, Mt Albert, Zephyr, Leaskdale, Uxbr, Goodwood, Ballantrae, Aurora, Schomberg, Whitchurch-Stouffville, King City, Nobleton, Richmond Hill, Markham, Vaughan, and North York. The text "York Region" is prominently displayed in the center of the blue overlay.

York Region

**We're partnering
with York community
to relocate an existing
men's shelter.**



PORTERPARTNERSHIP

YORKREGION



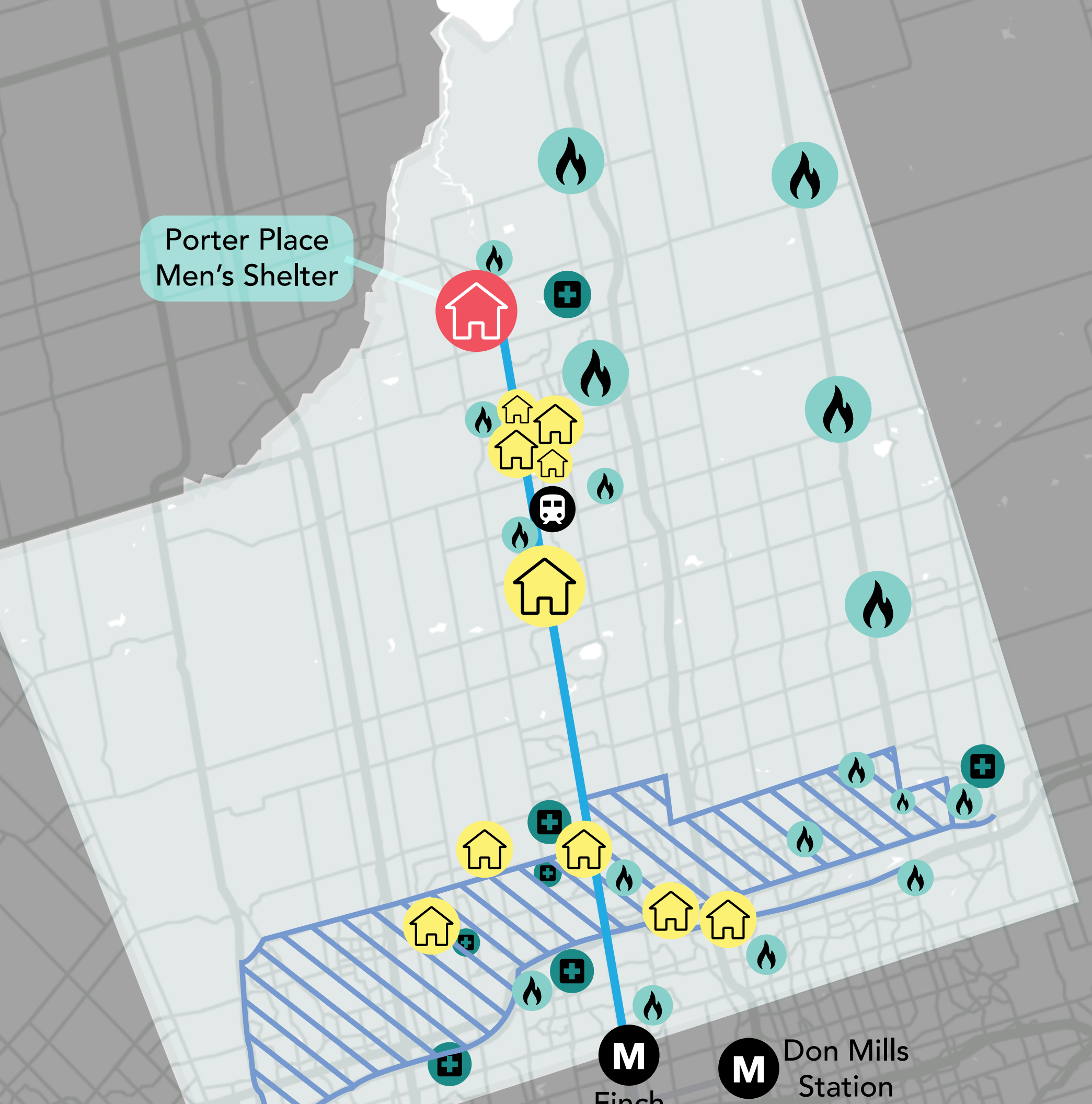
Average 1 bedroom apartment rent:

\$1,170

31% of male residents with high school education or lower. Average age is **39 years old**.

43%

of workers aged 25-65 years in York Region working in job some degree of precarity



Porter Place
Men's Shelter

**Existing shelter
and service locations.**

**How might we
redesign an existing men's
shelter to increase accessibility
to the community and quality
of life for users?**



WHY **MEN'S SHELTER?**

AGE: 25 AND 55—**47.5%**

**HAVE GREATER INCIDENCES OF MENTAL
ILLNESS, ADDICTIONS AND DISABILITY**

Vision

**Provide a home with
long-term opportunities
for residents to succeed
on their own.**



Mission

“**A safe and supportive homeless shelter with comprehensive programs and services to build a complete community.**”



CHALLENGES OF LOCATION

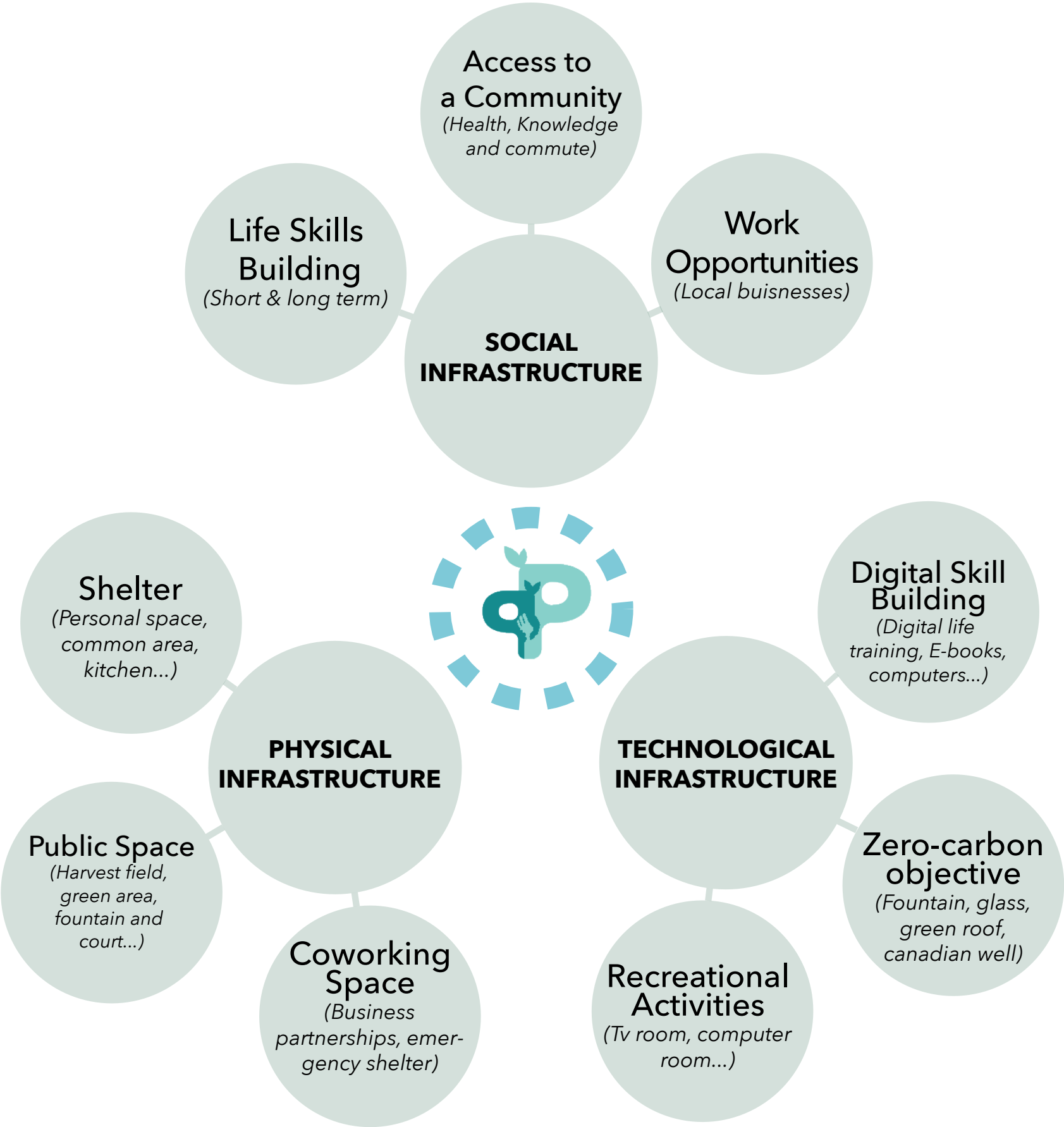
**ACCESS TO
AFFORDABLE
TRANSPORTATION
EMPLOYMENT OPTIONS
A COMMUNITY**



Porter Place

RELOCATION MAP

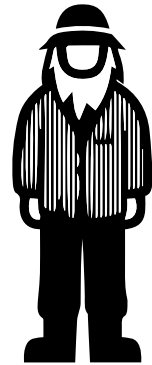
IDEAL SHELTER DESIGN CRITERIA



A MUTUAL COMMUNITY BENEFIT SHELTER.

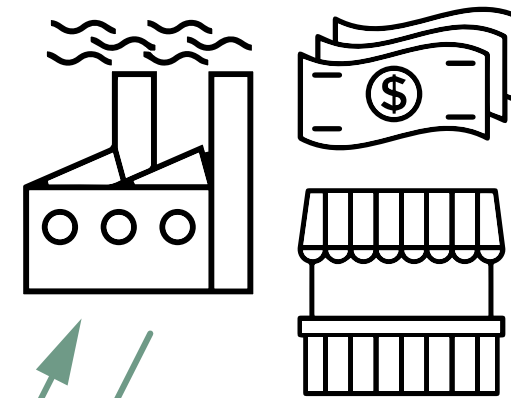


HOMELESS POPULATION



/ SOCIAL & WORK INCLUSION
/ ACCESS TO FORMATION & OPPORTUNITIES

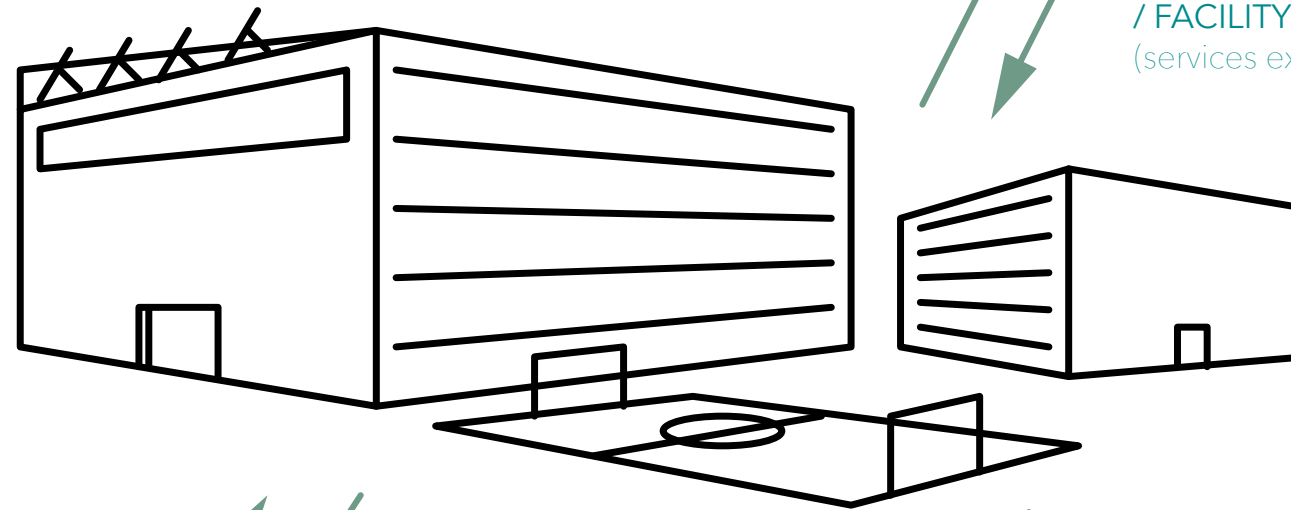
BUISNESSES & PARTNERS



/ PROGRAMS
/ MONEY IN
/ WORK
(Opportunities)

/ EMPLOYMENT
/ FACILITY ACCESS
(services exchange)

PORTER'S SHELTER



/ EARLY ACCESS TO
TREATMENT
/ INCREASE MOBILITY
/ SUPPORT

/ PROVIDE SAFE,
PRIVATE SPACE
/ OPPORTUNITIES
(through programs)
/ ACCESSIBILITY
(technology, health,
support)
/ LONG & SHORT
TERM SOLUTION

/ PORGRAMS
/ SUPPORT
EFFECTIVENESS

/ ACCESSIBILITY TO :
- Health (Hospital)
- Knowledge (Library)
- Mobility (commutes)

/ ANSWER DIFFERENT
NEEDS OF THE
COMMUNITY
/ CLOSING THE GAP
(between individual in the
community)

/ DEVELOPING CAPITAL
(Human & Economic)

/ PERCEPTION
(Stigma reduction)
/ INVOLVEMENT
(Programs & support)



HEALTH & COMMUTES

/ PREVENTING INSECURITY
(Feeling & Experience)



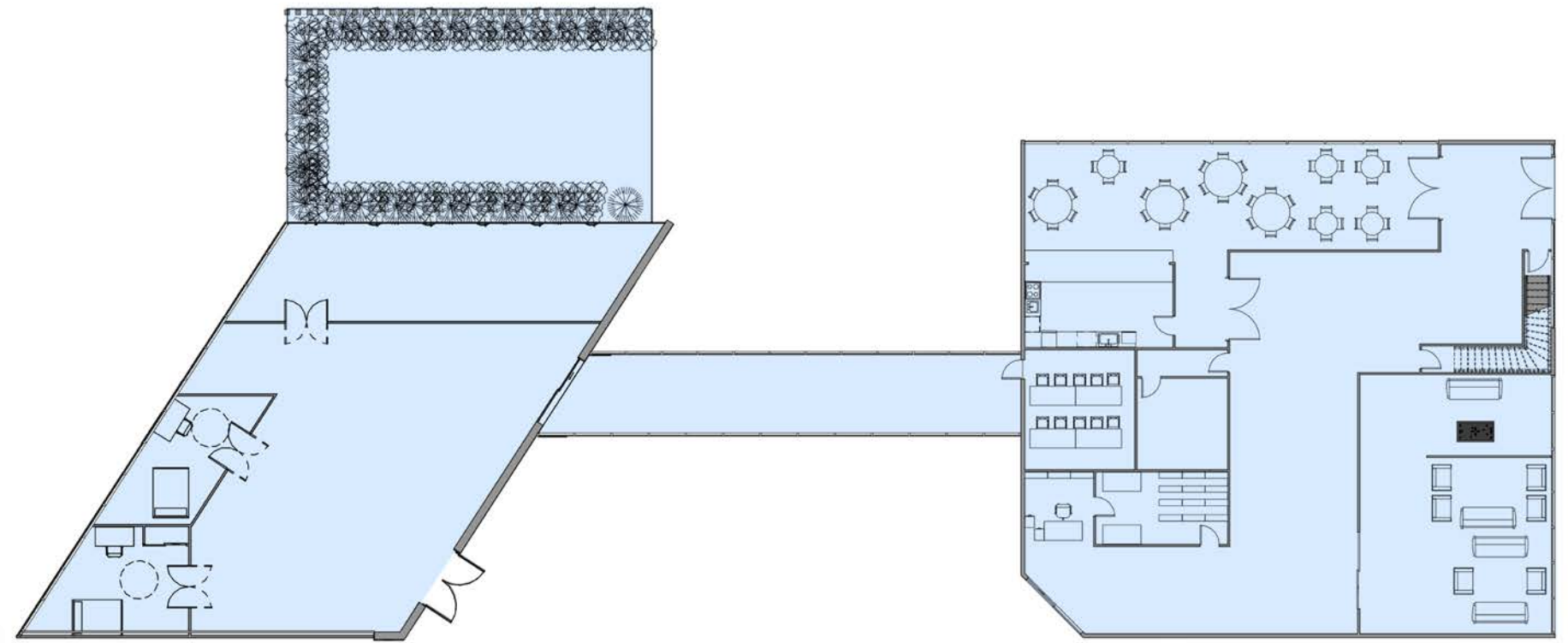
NEIGHBORHOOD



Porter Place

TOP VIEW NEAR SITE

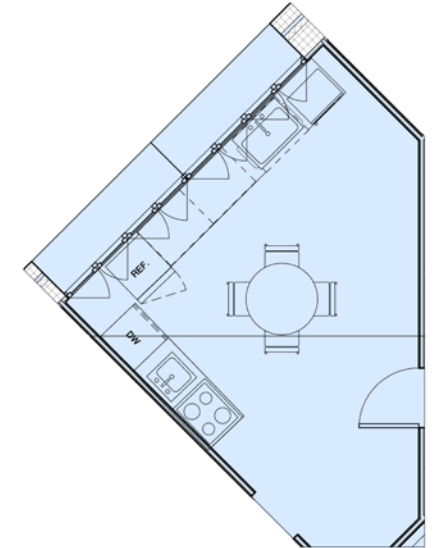
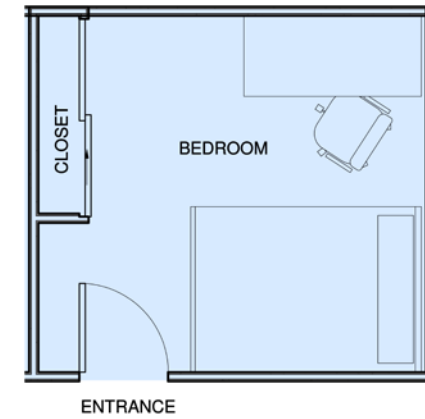
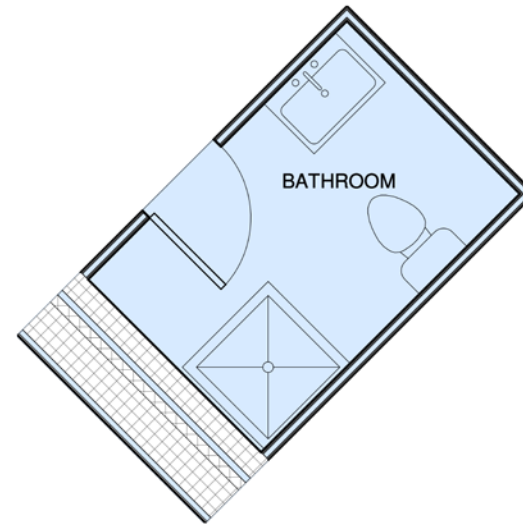
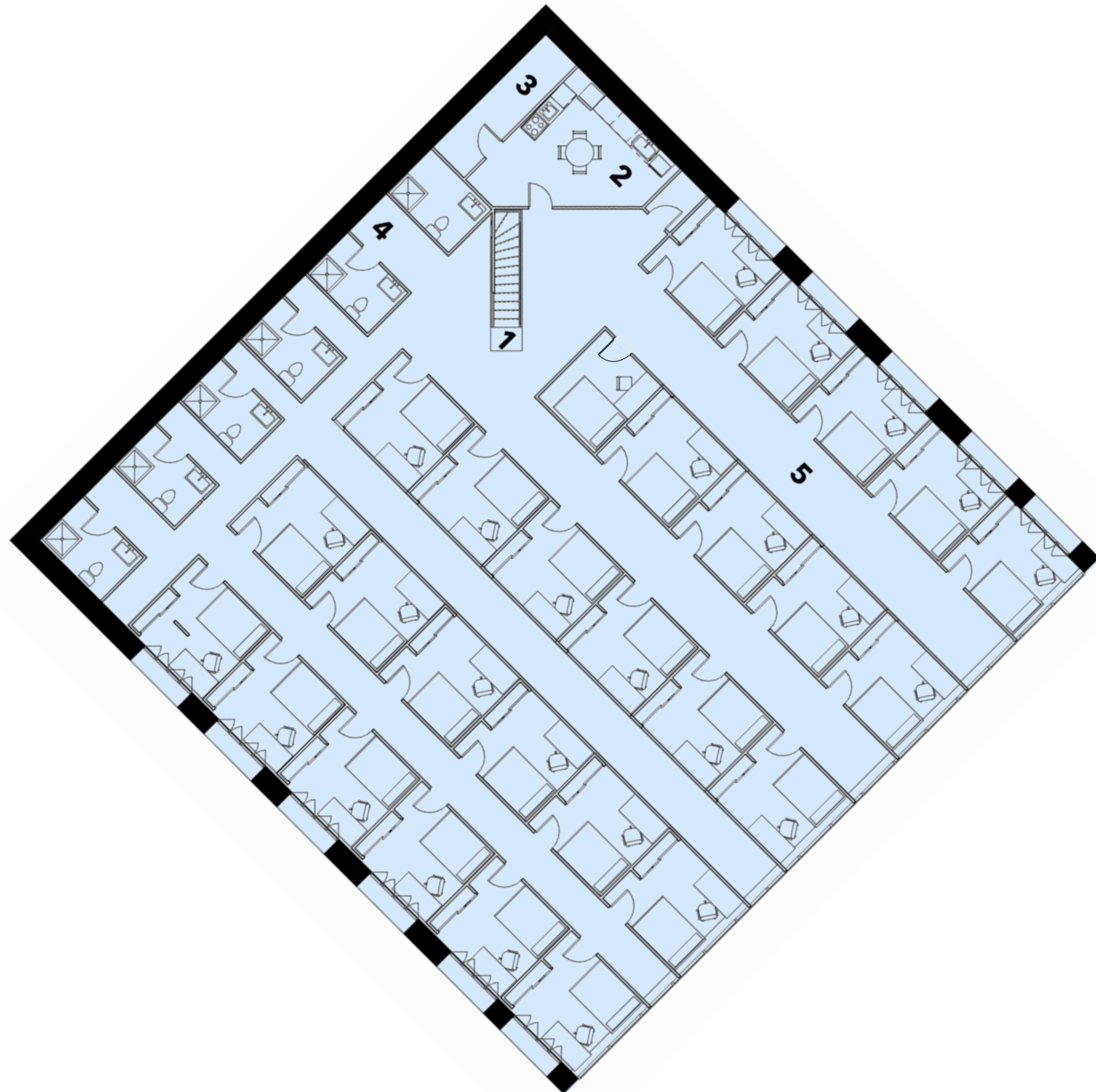
FLOOR PLAN



PORTER PLACE SHELTER, 1ST FLOOR

- 1 – FOYER/ENTRANCE
- 2 – STORAGE/INTAKE
- 3 – RECEPTION
- 4 – TV ROOM
- 5 – PROGRAM TRAINING ROOM
- 6 – KITCHEN
- 7 – DINING
- 8 – GAME ROOM

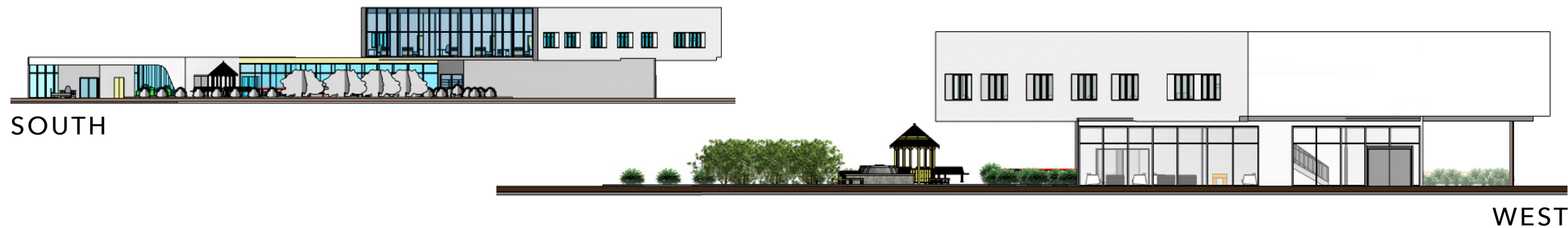
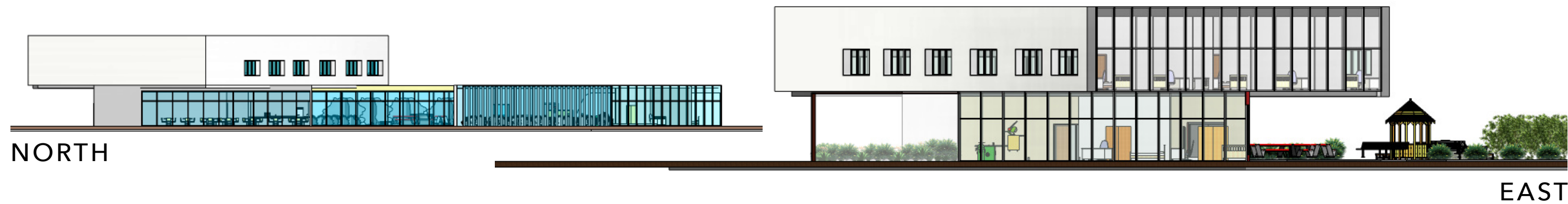
FLOOR PLAN



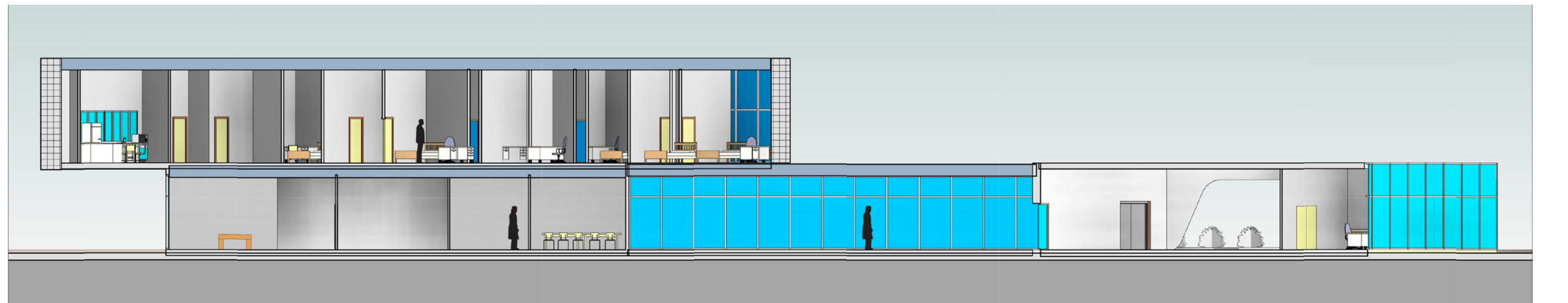
PORTER PLACE SHELTER, 2ND FLOOR

- 1 – FOYER/ENTRANCE
- 2 – KITCHEN
- 3 – STORAGE
- 4 – BATHROOMS
- 5 – BEDROOMS

ELEVATIONS



CROSS SECTION



SUSTAINABILITY FEATURES



SOLAR PANELS



TRIPLE PANE/SAGEGLASS



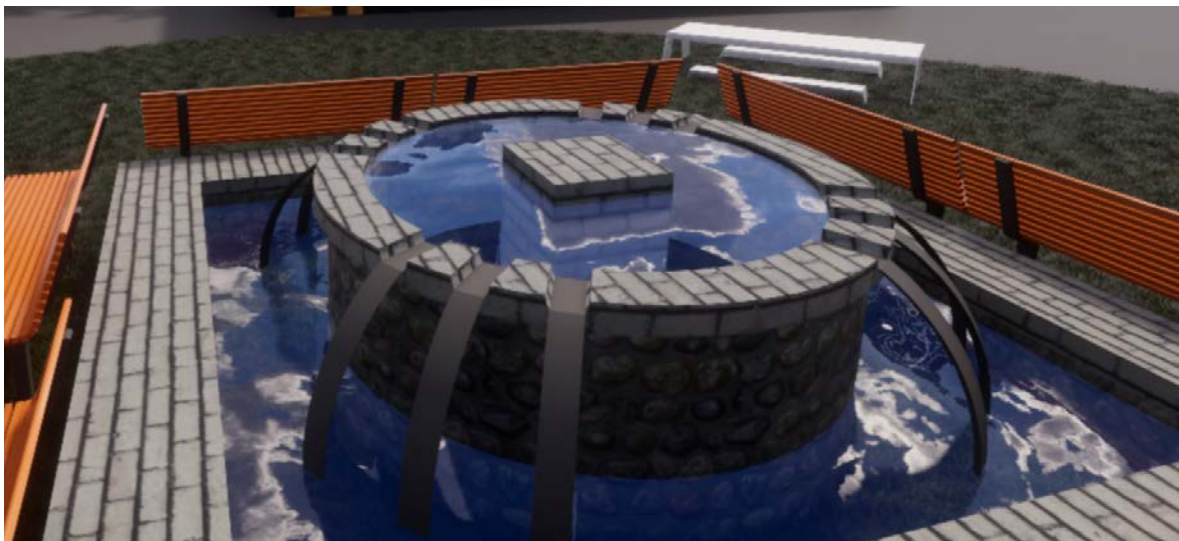
BAMBOO FLOORING



PERMEABLE CONCRETE



GREEN ROOF/GREEN SPACE



FOUNTAIN-RAINWATER COLLECTOR

Tom McDonald



Age 45 years old
Status Single
Location Newmarket, ON.

BIO

He doesn't have any family member, his mother passed away couple months ago. He started to loose his friends when he started developing bipolar disorder signs.

Roger McGill



Age 60 years old
Status Single
Location Newmarket, ON.

BIO

He was a construction worker, making enough money to pay the bill. However, he wasted all his income in abusing cocaine. He lost his home, his partner and his car and began couch-surfing.

John Johnson



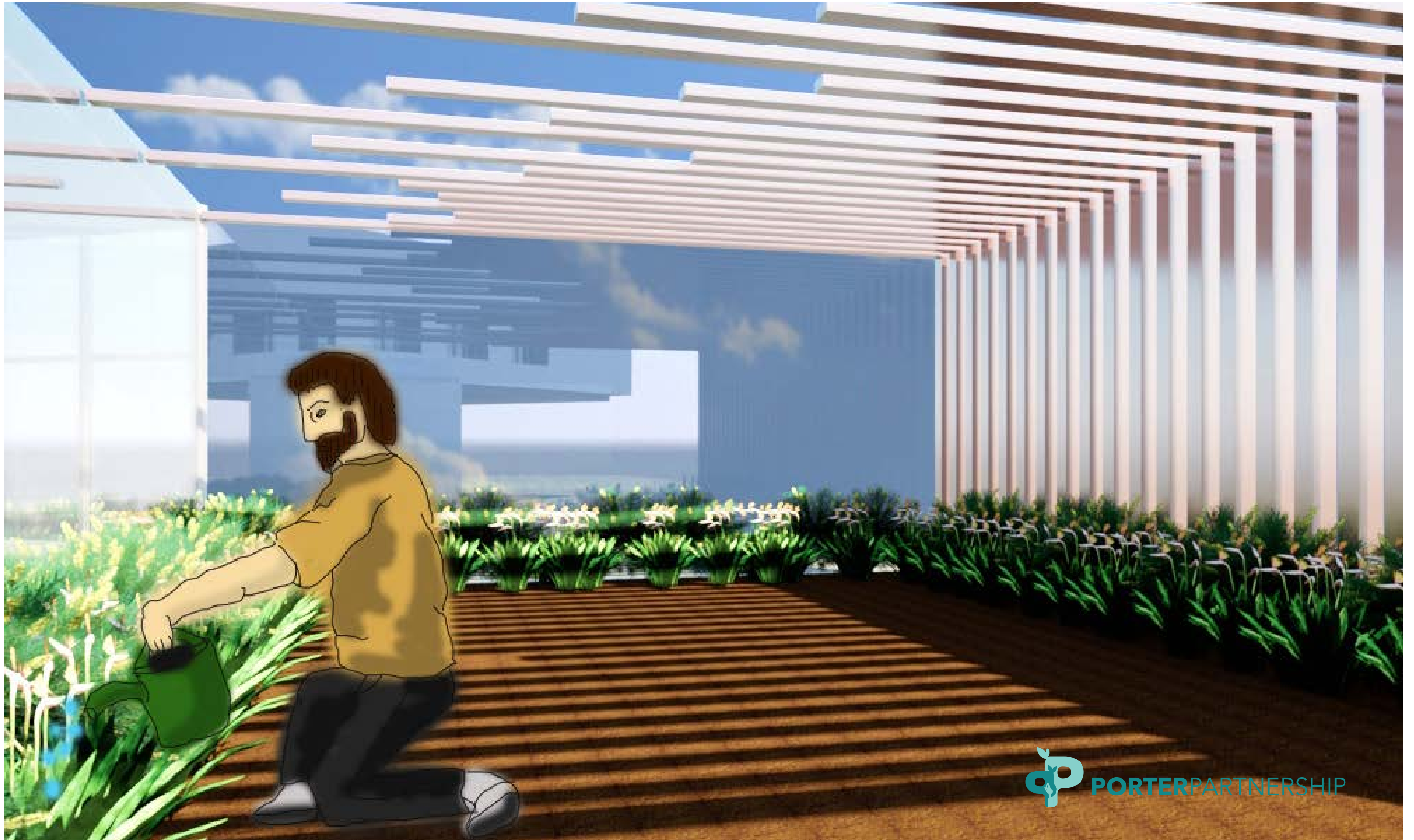
Age 34 years old
Status Single
Location Newmarket, ON.

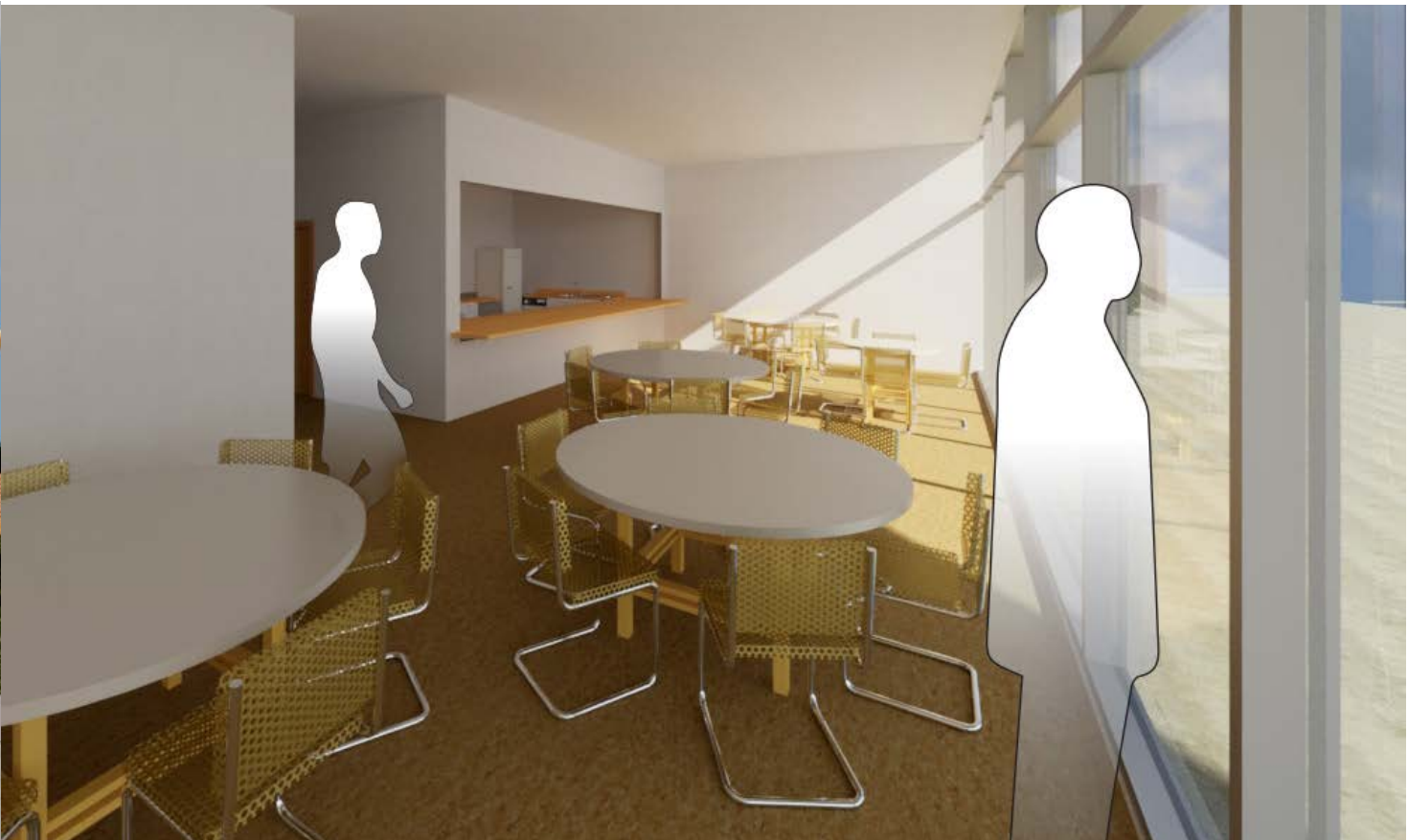
BIO

He has a physical disability caused by a car accident during his late twenties. His troubled life took a turn for the worse when his father died and left him emotionally broken and led to his homelessness.

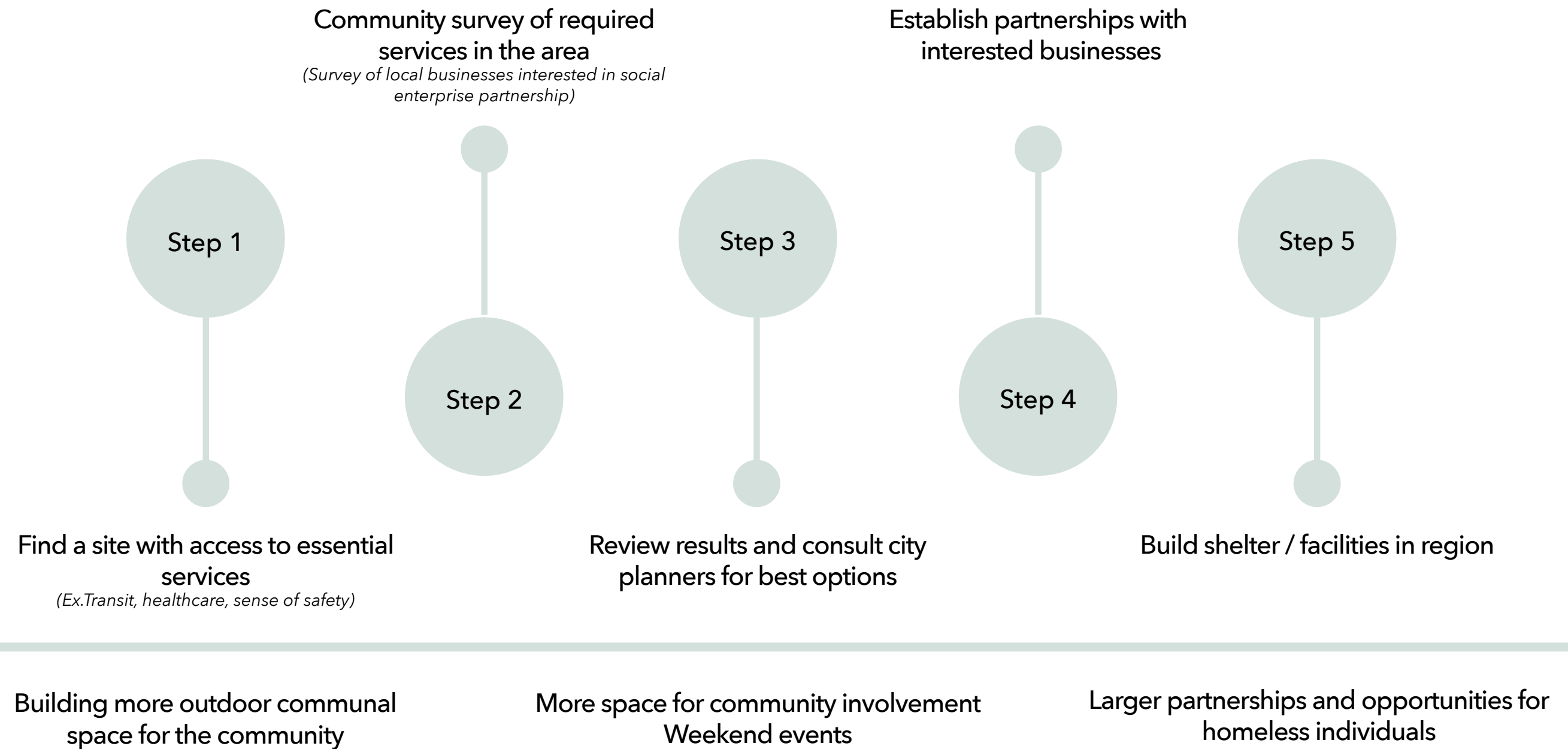








IMPLEMENTATION PLAN





HOMELESS NUMBER IN CANADA

> 150,000 CANADIANS

A YEAR USE A HOMELESS SHELTER AT
SOME POINT.

> 30,000 CANADIANS

ARE HOMELESS ON ANY GIVEN NIGHT.

> 50,000 CANADIANS

ARE PART OF THE "HIDDEN HOMELESS"
ON ANY GIVEN NIGHT



Thank you.