



IwB International

INSTITUTE WITHOUT
BOUNDARIES



Georgia Mac Mac

Faculty Advisor



Bahar Esmaeili

Facilitator



Marcela Araujo

Co-Facilitator



Raphael Segard

Co-Facilitator



Stephanie Ho

Graphic Designer



Tyler Lovell

Concept developer



Guilherme Sutto de Rezende

Visualization



Samin yazdan

Architecture



Jiahua zhang

Visualization



MISSION & VISION

Vision

Provide a home with long-term opportunities for residents to succeed on their own.

Mission

A safe and supportive homeless shelter with comprehensive programs and services to build a complete community.

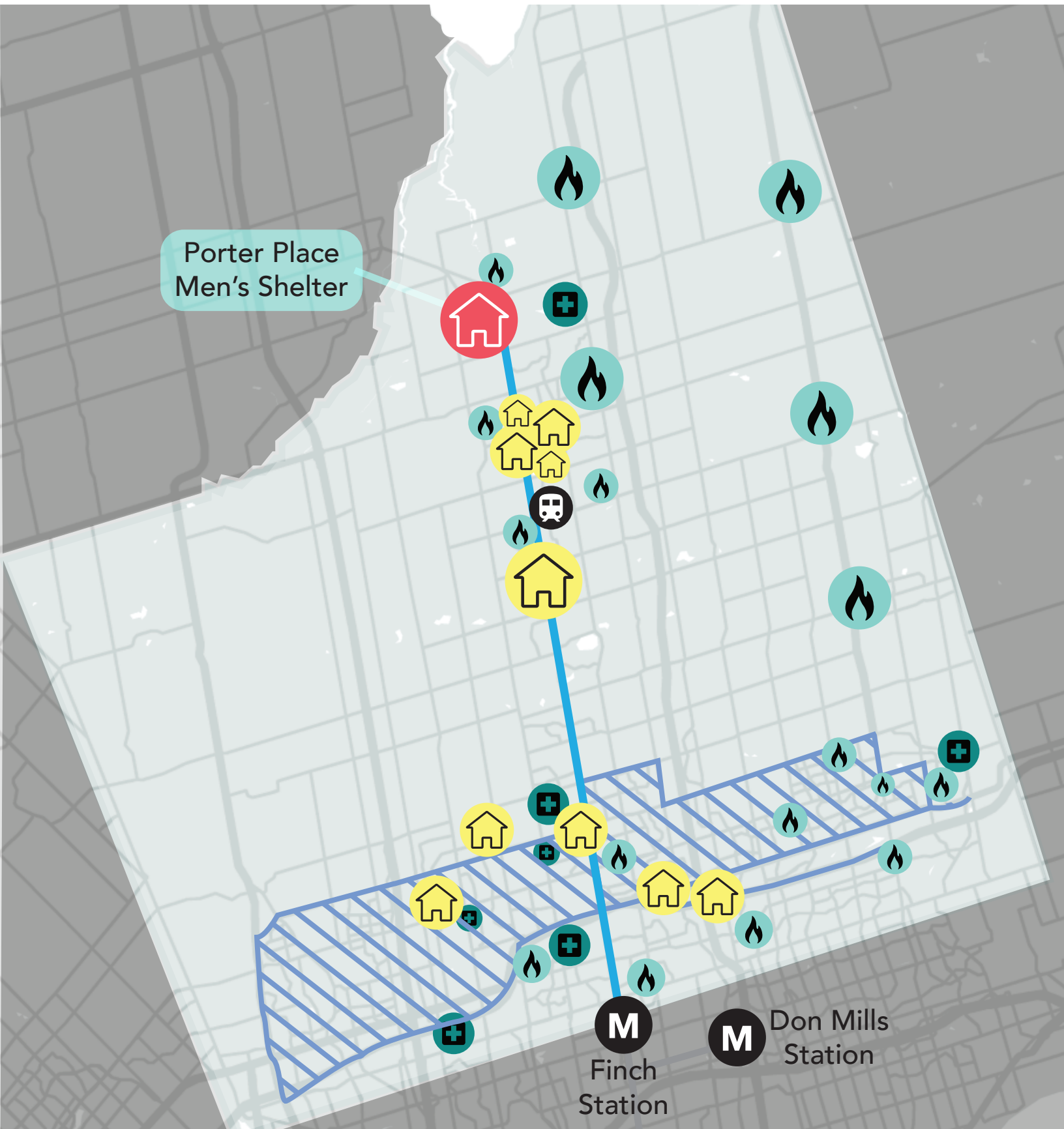




EXISTING SHELTER

The York region is growing and with that there are new challenges. Living costs are rising, average age is growing, and the job market is more and more precarious. These are all factors in the increasing rate of homelessness in the area.

Here we see the existing shelters and services available in the area



CHALLENGES OF LOCATING

**ACCESS TO
AFFORDABLE
TRANSPORTATION
EMPLOYMENT OPTIONS
A COMMUNITY**

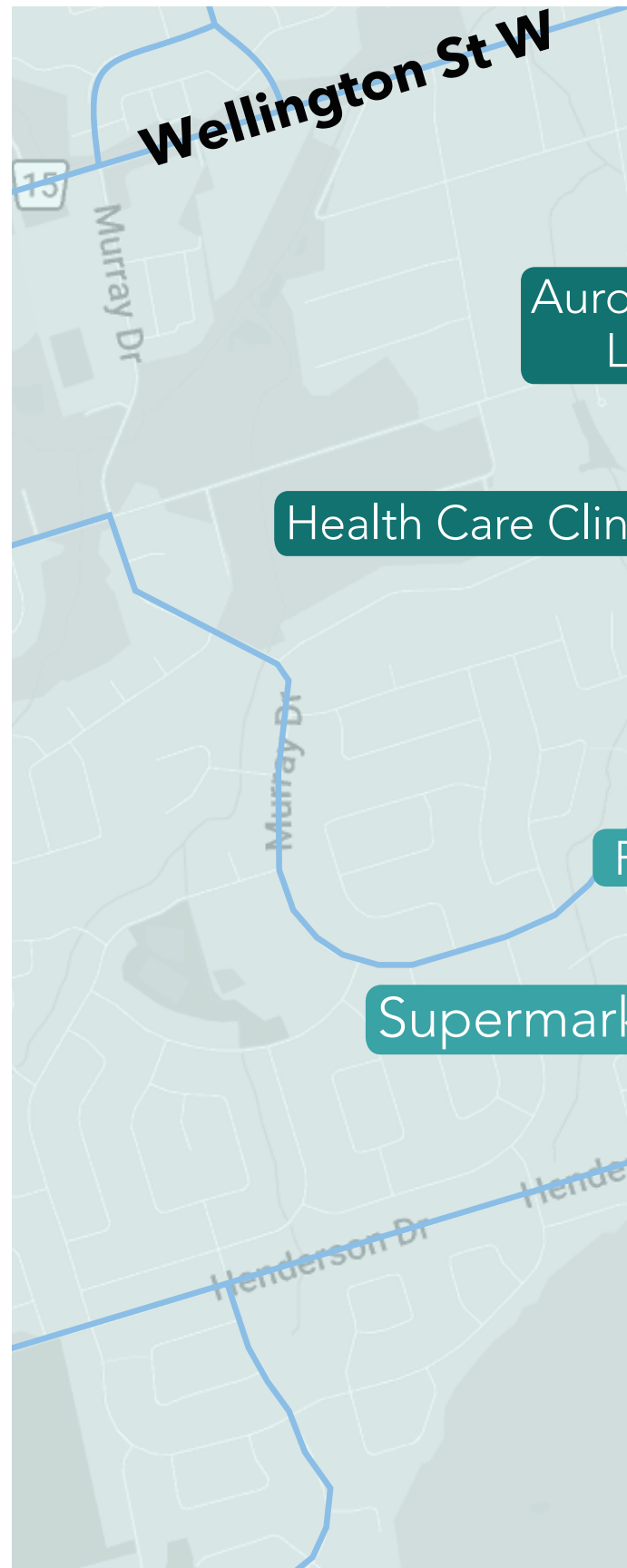
ION

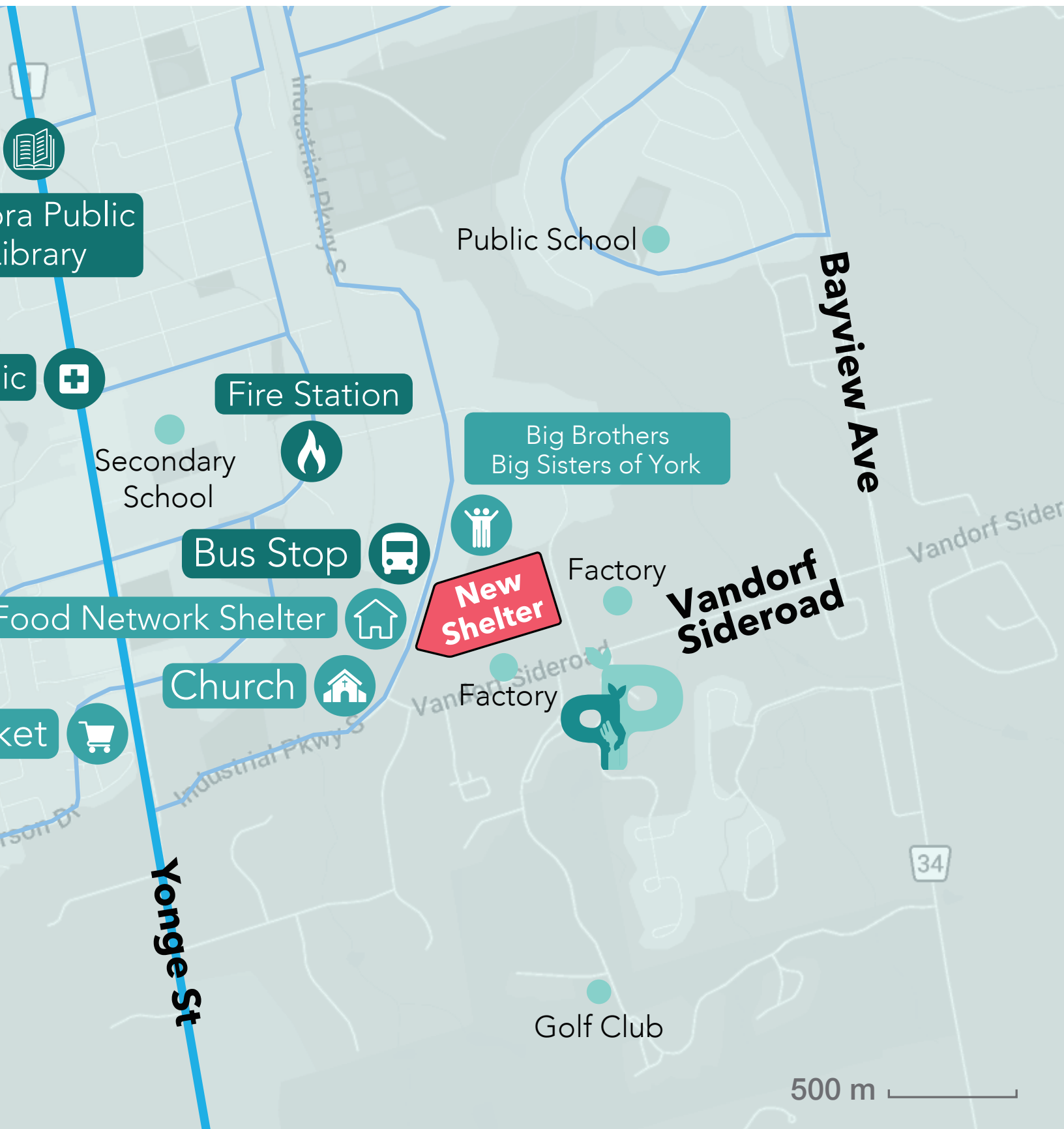
TIONS

*Some of the challenges
of our previous location
include access to
affordable transportation,
employment options, and a
thriving community*

RELOCATION MAP

These are some of the problems we solved with our relocation. We have positioned our new shelter next to transit, markets, and essential community services such as health care clinic, fire station, church, and public library.







OBJECTIVES

Our design criteria for an ideal shelter involves improvements in social, physical, and technological infrastructure.

Social infrastructure like access to a community, life building skills and work opportunities.

Physical infrastructure such as shelter, public space, and coworking space.

Technological infrastructure such as digital skill building, zero-carbon objective, and recreational activities

Digital Skill Building

(Digital life training, E-books, computers...)

Zero-carbon objective

(Fountain, glass, green roof, canadian well)



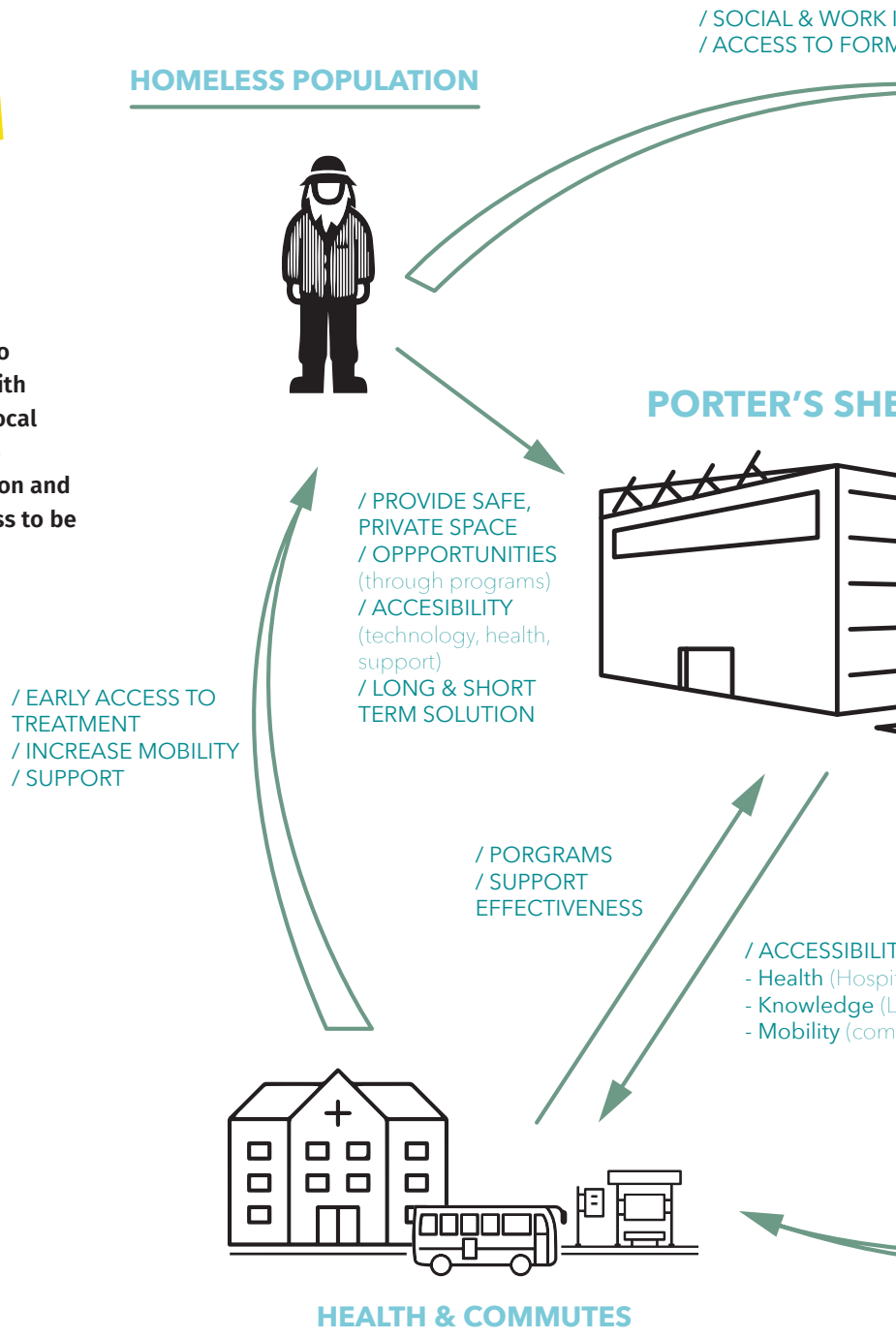


We locate our building in a high access area, allowing homeless individuals to have access to current community services such as transit, markets, and religious centers. We bring benefit to the community by making our shelter a co-located

space, in which a secondary partner is able to leverage the services the shelter provides (communal space, private offices, health care services) if they will provide growth opportunities for residents.

SYSTEMS DIAGRAM

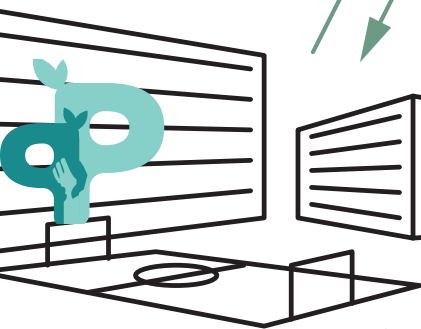
- In a supportive environment, easier access to community services provide the homeless with the chance for greater social inclusion and local employment options. This contributes to the community development, bettering perception and allowing more opportunities for the homeless to be an active part of their community.



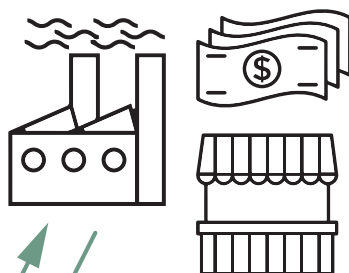
INCLUSION
ATION & OPPORTUNITIES

BUSINESSES & PARTNERS

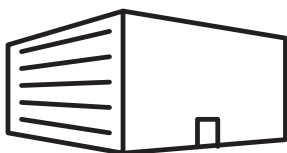
ELTER



/ PROGRAMS
/ MONEY IN
/ WORK
(Opportunities)



/ EMPLOYMENT
/ FACILITY ACCESS
(services exchange)



Y TO :
(tal)
(library)
(mutes)

/ ANSWER DIFFERENT
NEEDS OF THE
COMMUNITY
/ CLOSING THE GAP
(between individual in the
community)

/ PERCEPTION
(Stigma reduction)
/ INVOLVEMENT
(Programs & support)



NEIGHBORHOOD

/ PREVENTING INSECURITY
(Feeling & Experience)

/ DEVELOPING CAPITAL
(Human & Economic)

PERSONA SCENARIOS





PERSONAS SCENARIOS



Name: Tom McDonald
Location: Newmarket, ON
Occupation: N/A

“When people move into a place after being homeless for a long period of time, the first thing they lose is that social connection to other people.”

DEMOGRPAHICS

He is 45 years old, from Newmarket, ON. He doesn't have any family member, his mother passed away couple months ago. He started to loose his friends when he started developing bipolar disorder signs.

SCENARIOS

He's diagnosed with bipolar disorder. Since he had started to develop this disorder, he is unaware himself. He doesn't have a place called home anymore, and constantly spends the night at friend's couch. He eventually got kicked out by the landlord. He didn't experience homelessness until his mother died.

USER NEEDS

Social interaction to other people.

Good listeners to hear about their problems

GOALS

Wants assistance/ guidance for his mental health problem

MOTIVATIONS

Feel part of the society and not rejected



Name: Roger McGill
Location: Newmarket, ON
Occupation: Life Coach

“I was embarrassed every time I had to walk somewhere. To me that’s an embarrassment, People go by and they say, ‘Well, that guy can’t afford to buy a car.’”

DEMOGRAPHICS

He is 60 years old, from Newmarket, ON. He was a construction worker, making enough money to pay the bill. He used to have a partner, but now he has no kids or partner.

SCENARIOS

He left school early because he was bullied by classmates. His father was an alcoholic and suffered domestic violence as a child. At 16, he started drinking and doing drugs and was jailed for assault. Eventually he landed a job as a construction worker and was making \$60,000-70,000 a year. But with time he wasted all his income in abusing cocaine. He lost his home, his partner and his car and began couch-surfing.

USER NEEDS

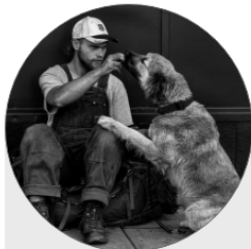
More educational tools and programs to help guide homeless people.

GOALS

Contributing back to the community

MOTIVATIONS

Overcoming drug problems with the help of Porter Place
 Seeing opportunities to do the same for others
 Show people that faith (religion) can help



Name: John Johnson
Location: Newmarket, ON
Occupation: N/A

“I’ve been homeless now for quite some time. I don’t even remember when there has ever been stability in my life,”

DEMOGRAPHICS

He is 34 years old, from Newmarket, ON. He has a dog called ‘Hugo’ since he was 25 years old. He has a physical disability.

SCENARIOS

He had a car accident when he was in his late twenties. Unfortunately he lost his left hand. His troubled life took a turn for the worse when his father died and left him emotionally broken and led to his homelessness. One day he was wandering the streets and met a stray dog that became his only company, and emotional support.

USER NEEDS

Requires medical care & pet needs
 A place to stay and learn life skills to cope with disability

GOALS

To ensure his companion needs are met
 Having access to disability friendly buildings

MOTIVATIONS

Wants a transition
 Needs someone to provide guidance in a professional way



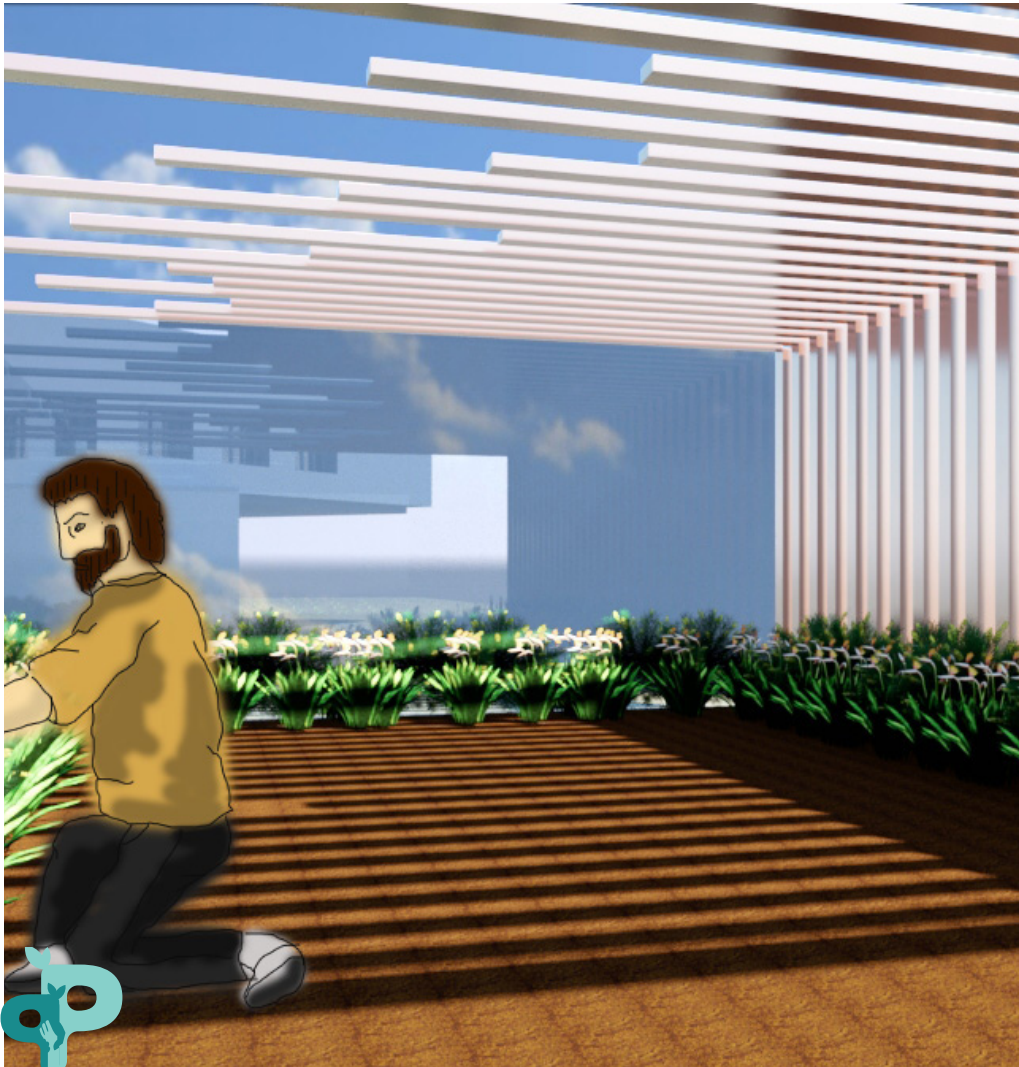
Tom McDonald

With the help of the shelter he's receiving the necessary treatment at Porter Partnership. In the new location, he will be able to access the hospital in the area. Tom is developing an interest in the technology program offered by Porter Partnership and he wants to continue with that path. The bedroom for him is a space to meditate, relax and have his own space.



Roger McGill with Tom McDonald

Roger was an alcoholic who suffered domestic violence. With the help of Porter place he was able to overcome his addiction problem. Now he wants to contribute back to the community by helping teach at the Porter Partnership. The kitchen is a space for Roger to teach culinary skills, a part of the programs offered by Porter Partnership.



John Johnson

He is an active member at the shelter. He is developing new skills, like gardening and carpentry. These help him to feel more confident about his life. John is finding the facilities accessible and barrier free. The garden is a space for him to develop and grow as an individual, by gaining hand on experience.

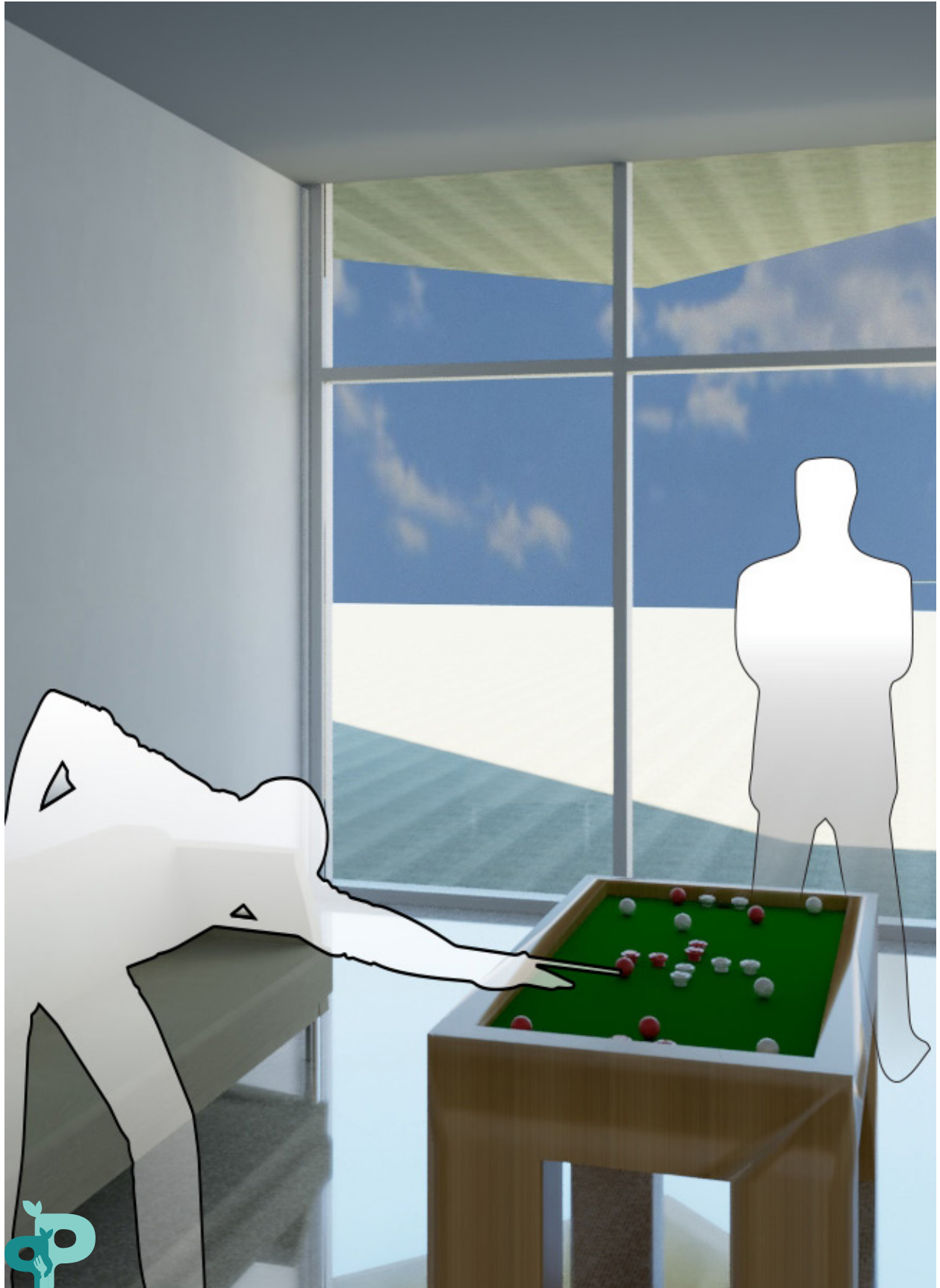




SERVICE DESIGNS

Here you can see the multitude of services
and activities available at our new facility



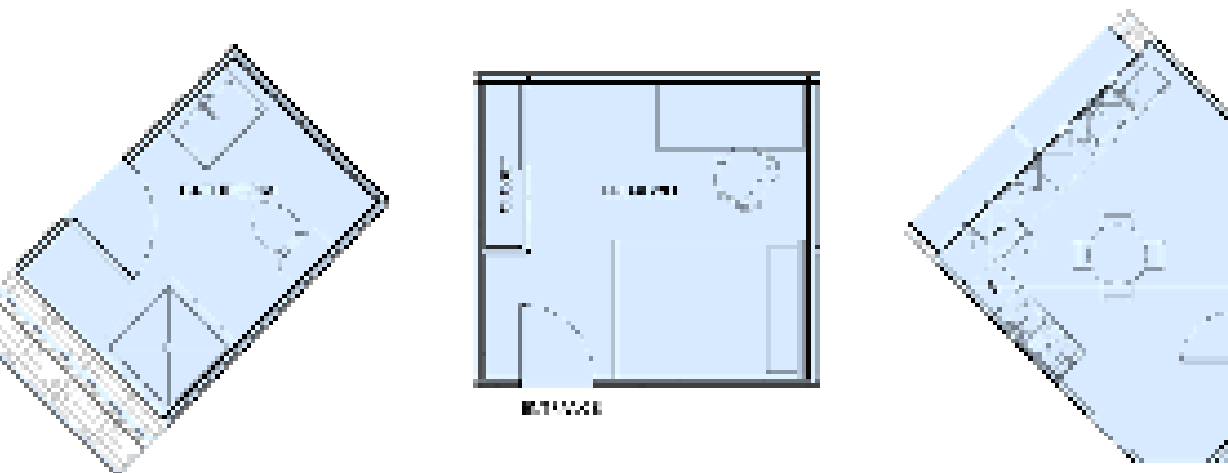






FLOOR PLAN



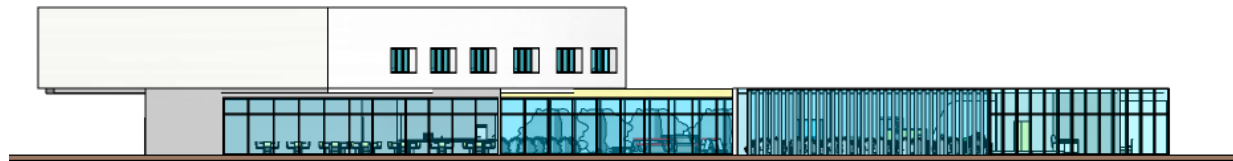


PORTER PLACE SHELTER, 2ND FLOOR

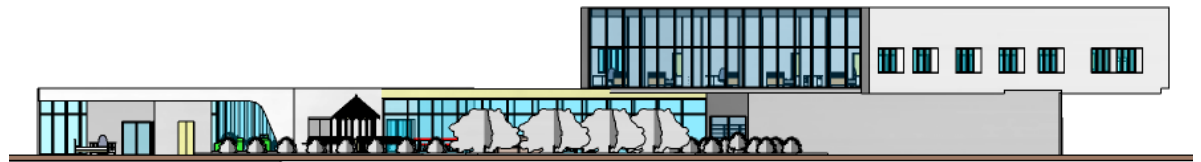
- 1-FOYER/ENTRANCE
- 2-KITCHEN
- 3-STORAGE
- 4-BATHROOMS
- 5-BEDROOMS

| 1000 PORTER PLACE - 2ND FLOOR | 10

ELEVATIONS



NORTH



SOUTH

CROSS SECTION

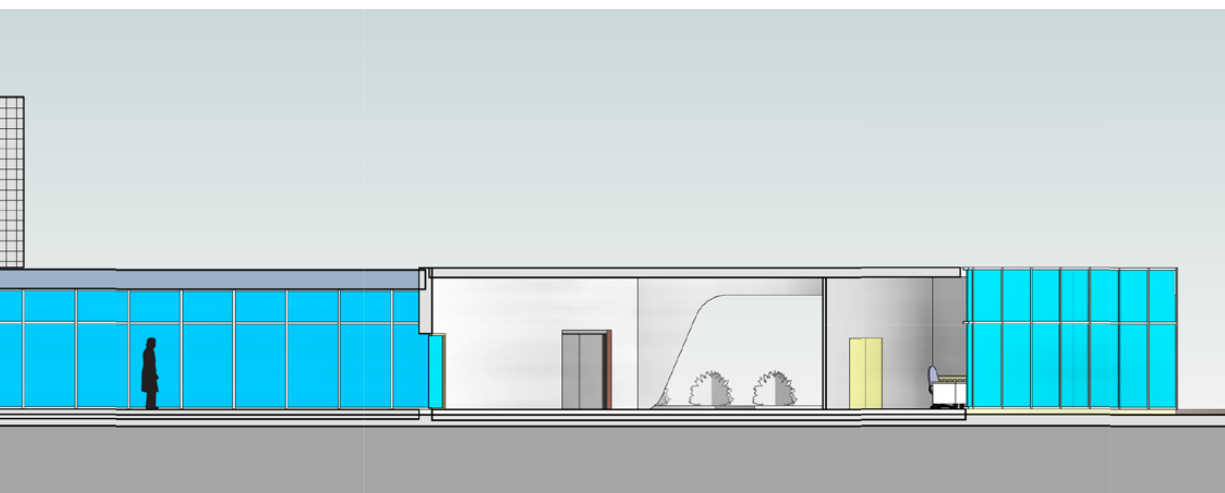




EAST



WEST



SOURCES

- <http://bluedoorshelters.ca/2016/03/homelessness-growing-in-york-region/>
- <http://www.innfromthecold.ca/homelessness-in-york-region>
- <http://www.innfromthecold.ca/homelessness-in-york-region>
- <https://www.york.ca/wps/wcm/connect/yorkpublic/d7e035d6-0d8a-48d8-965e-f0e8747982d9/Understanding+the+Numbers+final.pdf?MOD=AJPERES>
- <https://www.theverge.com/2018/3/12/17101856/3d-printed-housing-icon-shelter-housing-crisis>
- <https://www.youtube.com/watch?v=SvM7jFZGAec>
- <https://www.businessinsider.com/new-york-homeless-crisis-deblasio-solutions-2018-2>
- https://www.ryerson.ca/malleablematter/images/publications/Transformable_space.pdf
- <https://www.theguardian.com/society/2018/dec/19/wooden-sleeping-pods-privacy-shelter-london-homeless-deptford>
- <http://www.partnershipforthehomeless.org/news/entry/Partnership-Challenges-NYS-Education-Dept-/>
- <https://vancouver.sun.com/news/local-news/new-temporary-modular-housing-opens-for-homeless-in-surrey>
- https://www.mungos.org/wp-content/uploads/2018/02/ST_Mungos_HousingFirst_Report_2018.pdf
- <http://designresourcesforhomelessness.org/>
- <https://chapmanpartnership.org/about-us/facilities/>
- <https://chapmanpartnership.org/about-us/>
- <http://www.mah.gov.on.ca/Page16461.aspx>
- <https://www.vancourier.com/community/city-living-chocolate-treats-give-hope-to-women-1.805183>
- <https://www150.statcan.gc.ca/n1/pub/75-006-x/2017001/article/14824-eng.htm>
- <https://www.homelesshub.ca/solutions/priority-populations/single-men>
- <https://www.yorklink.ca/live-work-york-region/>
- <https://www.woodgreen.org/OurSuccesses/HomewardBound.aspx>
- <https://www.york.ca/wps/wcm/connect/yorkpublic/63e7aab9-b98c-4668-9388-c9d988b0ae1c/18013censusBulletin2016PopulationDwellingupdatedMay2018.pdf?MOD=AJPERES>
- <https://www.yorklink.ca/live-work-york-region/>